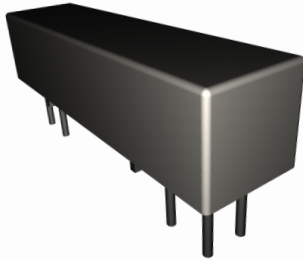


20Z Series

PCB Mount



PRODUCT DESCRIPTIONS

The 20Z Series consists of our 20 Series mercury switch contact, which is free of directional constraints. This feature allows you to mount the 20Z Series relay in any direction like a standard reed relay. This relay is ideal when you especially concern for reliable operation, power distribution, and switching characteristics.

Specifications

20Z Series		20Z-1A□2□0		20Z-1A□2E0		Non Directional Mercury
Parameters	Units	1 Form A		1 Form A		Test Conditions
Coil Specifications						
Nominal Coil Voltage	VDC	5.0	12.0	5.0	12.0	±10% @ 20°C 15°C to 35°C 15°C to 35°C
Coil Resistance	Ω	50	300	70	330	
Operate Voltage	VDC Max	3.6	8.8	3.6	8.8	
Release Voltage	VDC Min	0.7	1.2	0.7	1.2	
Contact Ratings						
Switching Voltage	Volts	500		500		Max DC/Peak AC resistance
Switching Current	Amps	0.5		0.5		Max DC/Peak AC resistance
Carry Current	Amps	2.0		2.0		Max DC/Peak AC resistance
Contact Rating	Watts	50		50		Max DC/Peak AC resistance
Life Expectancy	x10 ⁶ Cycle	500		500		@ 1V 10mA
Contact Resistance	mΩ	100		100		Max initial @ operate voltage
Contact Resistance Stability	mΩ	2.0		2.0		Max initial @ operate voltage
Relay Specifications						
Insulation Resistance	Ω Min	10 ¹⁰		10 ¹⁰		Between all isolated pins @ 500V 20°C 40%RH
Dielectric Strength	VDC Min	1000		1000		Between contacts
	VDC Min	1000		1000		Contacts to shield
	VDC Min	1000		1000		Contacts/Shield to coil
Operate Time (No Bounce)	msec Max	1.2		1.2		@ nominal coil voltage
Release Time	msec Max	1.2		1.2		50Hz square wave Diode suppression
Environmental Ratings						
Measurement Reference Conditions		Storage temp: -20°C to +80°C				
Temp: 15°C to 35°C		Operate temp: -10°C to +60°C				
Humidity: 25% to 75%RH		Vibration: 20G's to 2000Hz				
Atmospheric Pressure: 860 to 1060hpa		Shock: 50G's				

Ordering Code:

20Z-1A□1)2□2)0

□ 1)=1 (5.0VDC), 2 (12.0VDC)

□ 2)=D (Diode), N (No diode)

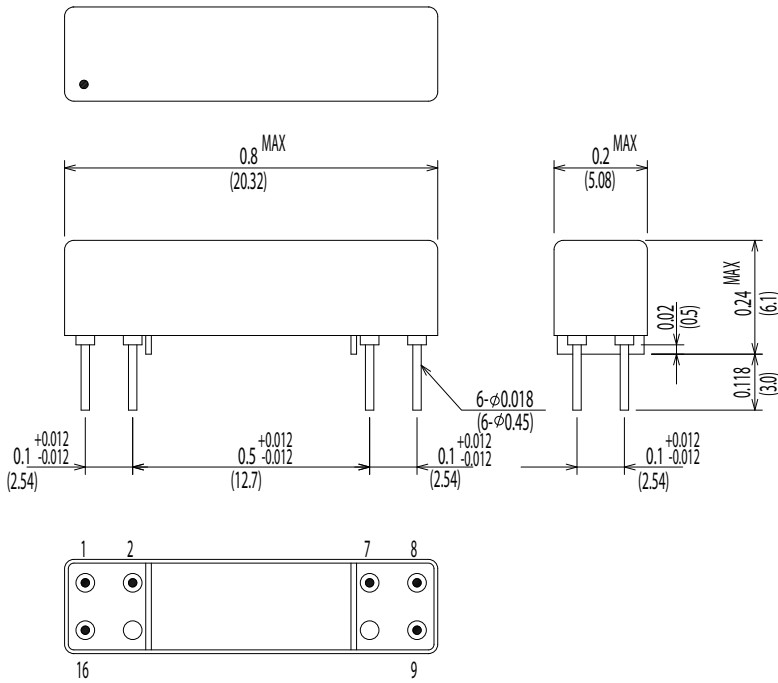
20Z-1A□2E0

□ =1 (5.0 VDC), 2 (12.0VDC)

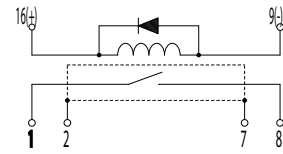
Dimensions All Dimensions are inches (mm)

Schematic <Top View>

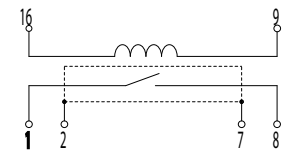
20Z-1A□2D0/20Z-1A□2N0



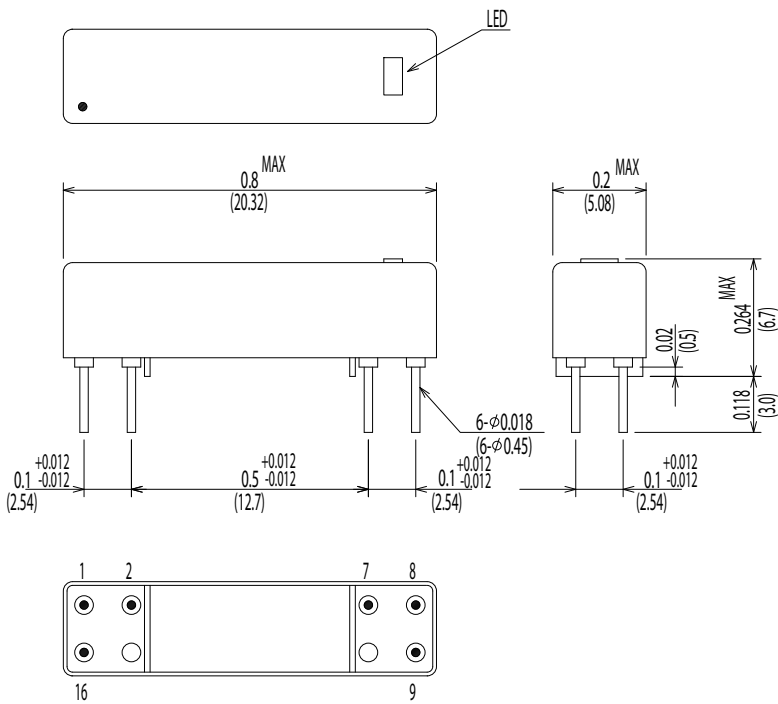
20Z-1A□2D0



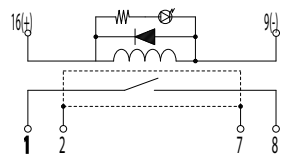
20Z-1A□2N0



20Z-1A□2E0



20Z-1A□2E0



Note: Hg wet contacts must be mounted within 30° of vertical plane.